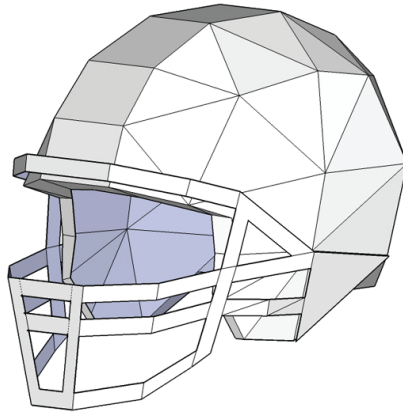




WINTERCROFT



# Football Helmet Mask

Designed by Steve Wintercrott

## Materials required

- ☐ Access to a printer and 12 sheets of A4 paper or US Letter paper.
- ☐ Thin card for the helmet, the type used in cereal boxes or packaging works well. You can use a thicker, rigid card for the bars. The approximate area of flat card that you need is around 3 large cereal box or around 3 sheets of A3 card for the helmet 1 large piece of stiff card for the bars (700mm x 200mm).
- ☐ Spray mount, Pritt stick, PVA or something that will stick paper to card.
- ☐ Scissors or a craft knife.
- ☐ Straight forward sticky tape, you can use basic cheap tape but I've found that Scotch Magic invisible tape gives a neater finish.
- ☐ Some spare time – approximately 4 to 6 hours.

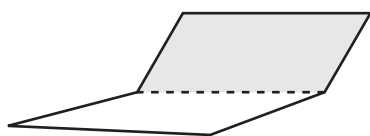
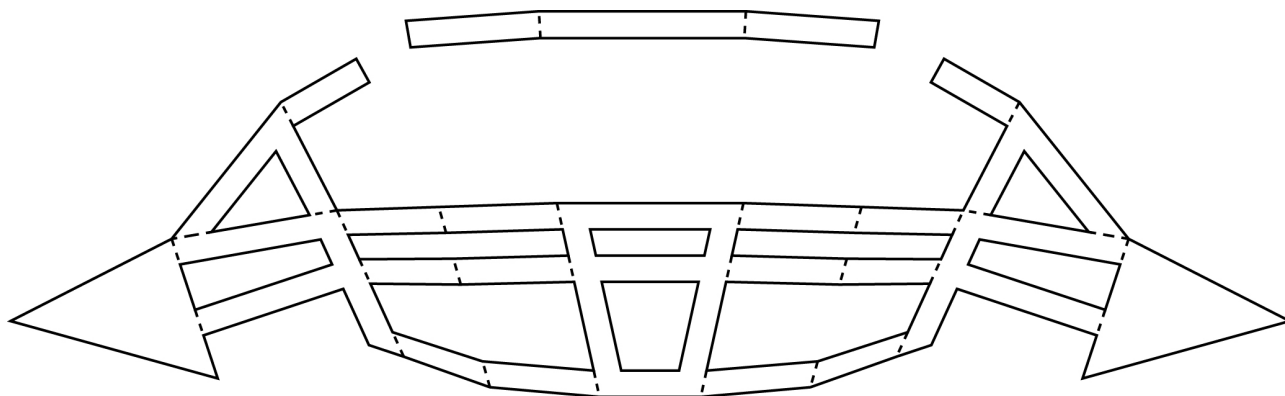
## Printing instructions

- ☐ The templates are 1:1 scale and are intended to be printed at ACTUAL SIZE on either A4 paper (210mm X 297mm) or US Letter paper (8½" X 11"). In your printer setting please select the type of paper that you are printing on but DO NOT SCALE THE TEMPLATES TO FIT THE PAPER.
- ☐ I have included a 150mm line on the first page of the templates so that you can check the scale. The line should measure 150mm after printing but plus or minus 2mm is acceptable. There is more information on printing the templates in our FAQ section of the website.

## Instructions for assembly

### Cutting and Folding

1. Having printed the templates on paper, set aside the parts on pages 10 and 11 these will be the bars. Trim the rest of the parts roughly to the approximate size, they don't have to be neat. Trimming off the excess paper makes it easier to arrange the templates on the card.
2. Glue these templates to the thinner card. When you assemble your helmet your templates will be on the inside faces. First choice for gluing the templates would be Spray Mount. It's available from most art shops but can be expensive. A glue stick is a cheaper alternative and also works really well.
3. Accurately cut out the parts on pages 10 and 11 following the solid lines. Stick these to your thick, rigid card joining the templates with corresponding numbers as you go. By joining the templates before you cut them out, you minimise the joins in the finished part (See the diagram below).
4. Cut out all of the templates along the solid outlines. Cut the solid outlines only, not the dashes. When you come to cut out the bars cut the outline first. Then you have a choice, if you want to you can cut out the gaps between the bars using a craft knife. Make sure that you use a cutting mat or similar to protect the surface that you are working on. If you don't feel like cutting out the holes you can leave them and draw the bars on the outside of the finished part. Cut out the rest of your parts.
5. The fold lines on the templates are marked as either a dashed line representing a valley fold or dashes with dots to represent a mountain fold. This is with the templates on the inside of the mask.
6. Score all of the folds marked on templates with either a blunt knife or scissors. Score and fold all of your parts.



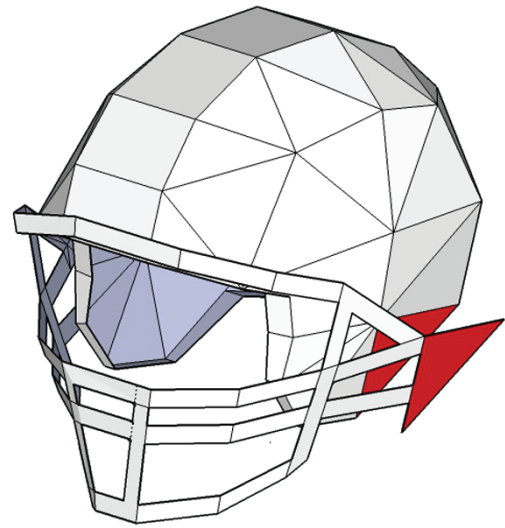
Dashed line represents  
a valley fold.



Dashed line with dots  
represents a mountain fold.

## Assembly

7. Assemble the helmet. Starting with any edge, find the neighbouring part with matching numbers. Tape together the edges with corresponding numbers for example number 48 joins to number 48. It is quicker and easier to tape on the outside but it is possible to assemble the helmet with the tape on the inside. If a join feels like it is under stress it is a good idea to tape it inside and out to reinforce it. Having built the helmet attach the bars to the outside of the helmet by gluing the triangle to the outside surface of the helmet (See diagram opposite).
8. Once you have built your helmet, make the head band following the instructions on the final page and tape it to the inside of the helmet. You might need to adjust the band forward or back to get the best fit.



9. You can paint or decorate your mask in any way that you like. Have a look at our website or facebook page for inspiration.

Please keep in mind that this helmet is something that you have made yourself, from cardboard and will not protect your head if you decided to do something stupid whilst wearing it.

If you run in to any problems or have any questions please check the frequently asked questions on:

**[www.wintercrafter.com](http://www.wintercrafter.com)**

If you still can't find the answer to your questions, then please send me a message to the address in the contacts below.

### Please note

These designs are copyrighted and are intended for your own personal use only. Please use this file to make as many masks as you like for yourself.

Please don't share or steal the templates, there was a lot of work involved in creating them. If you want to use them for any other reason then please get in touch.

**THESE MASKS ARE A PERSONAL CRAFT PROJECT, PLEASE DO NOT USE THEM FOR PROFIT.**

### Contact us

I would love to see your finished creations, please share them on my Facebook page:

**[www.facebook.com/wintercraftermasks](https://www.facebook.com/wintercraftermasks)**

or use the Instagram handle:

**@wintercrafter**

Many thanks and have fun,  
Steve

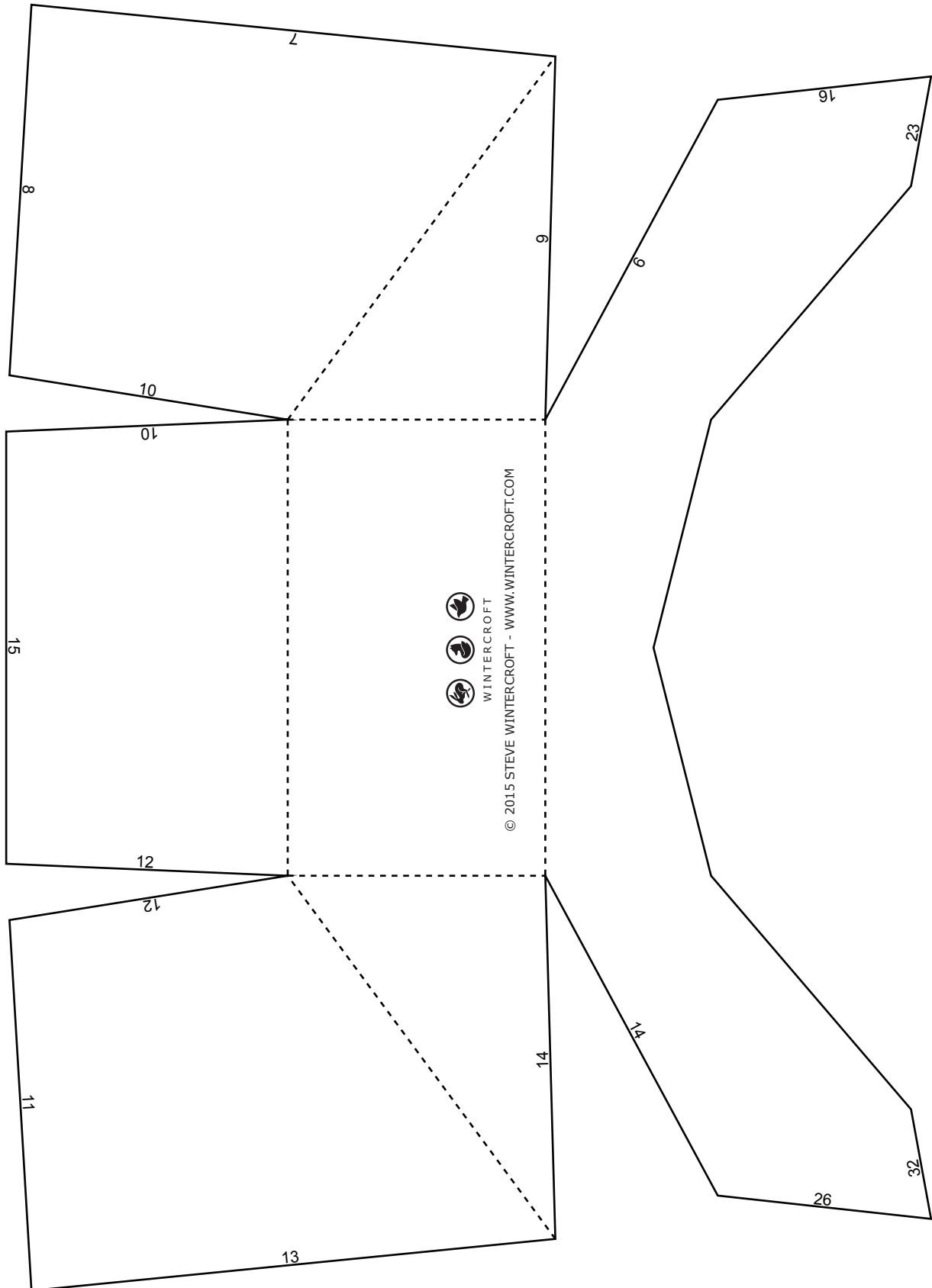
**[info@wintercrafter.com](mailto:info@wintercrafter.com)**

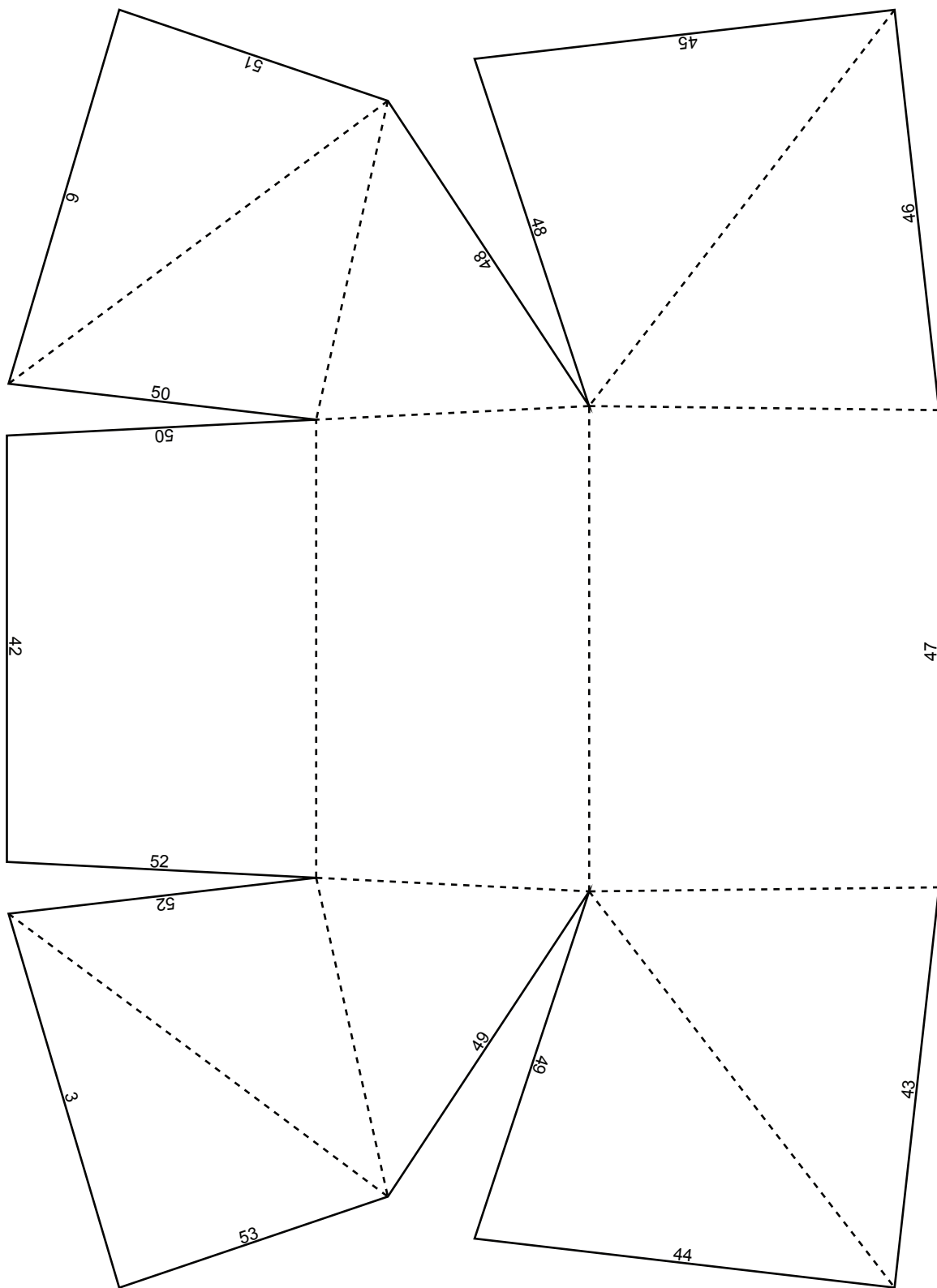


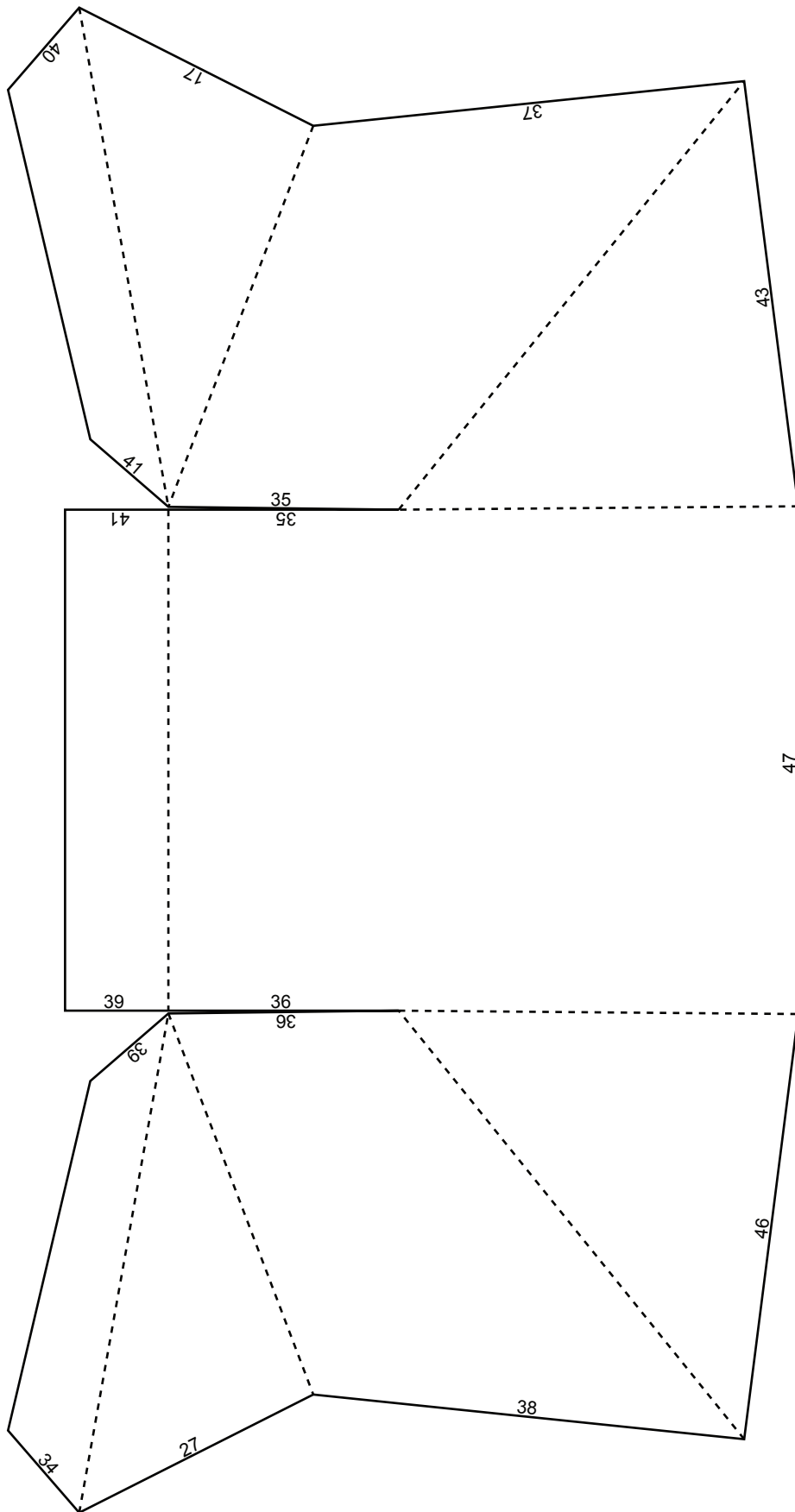
WINTERCROFT

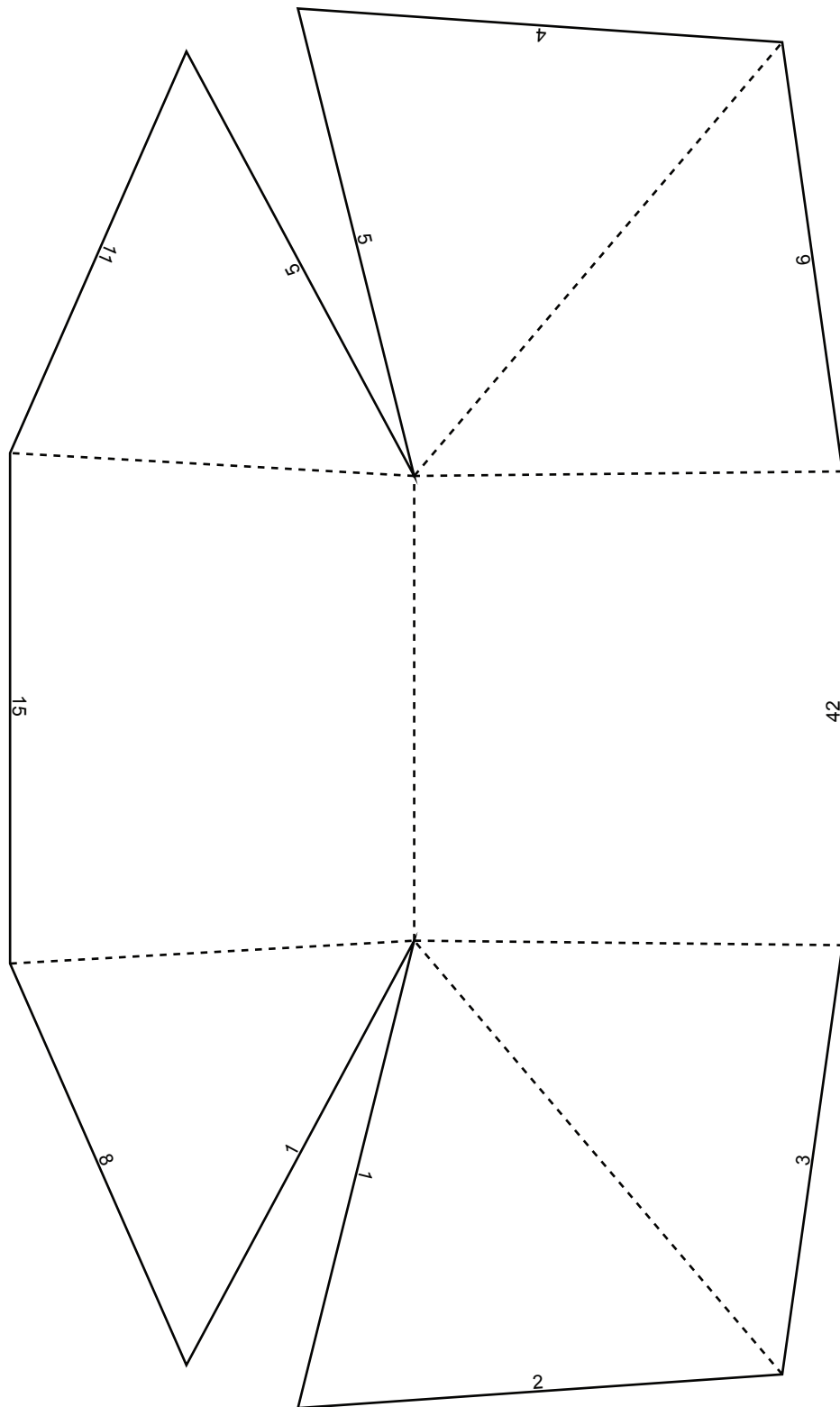
# Scale Guideline

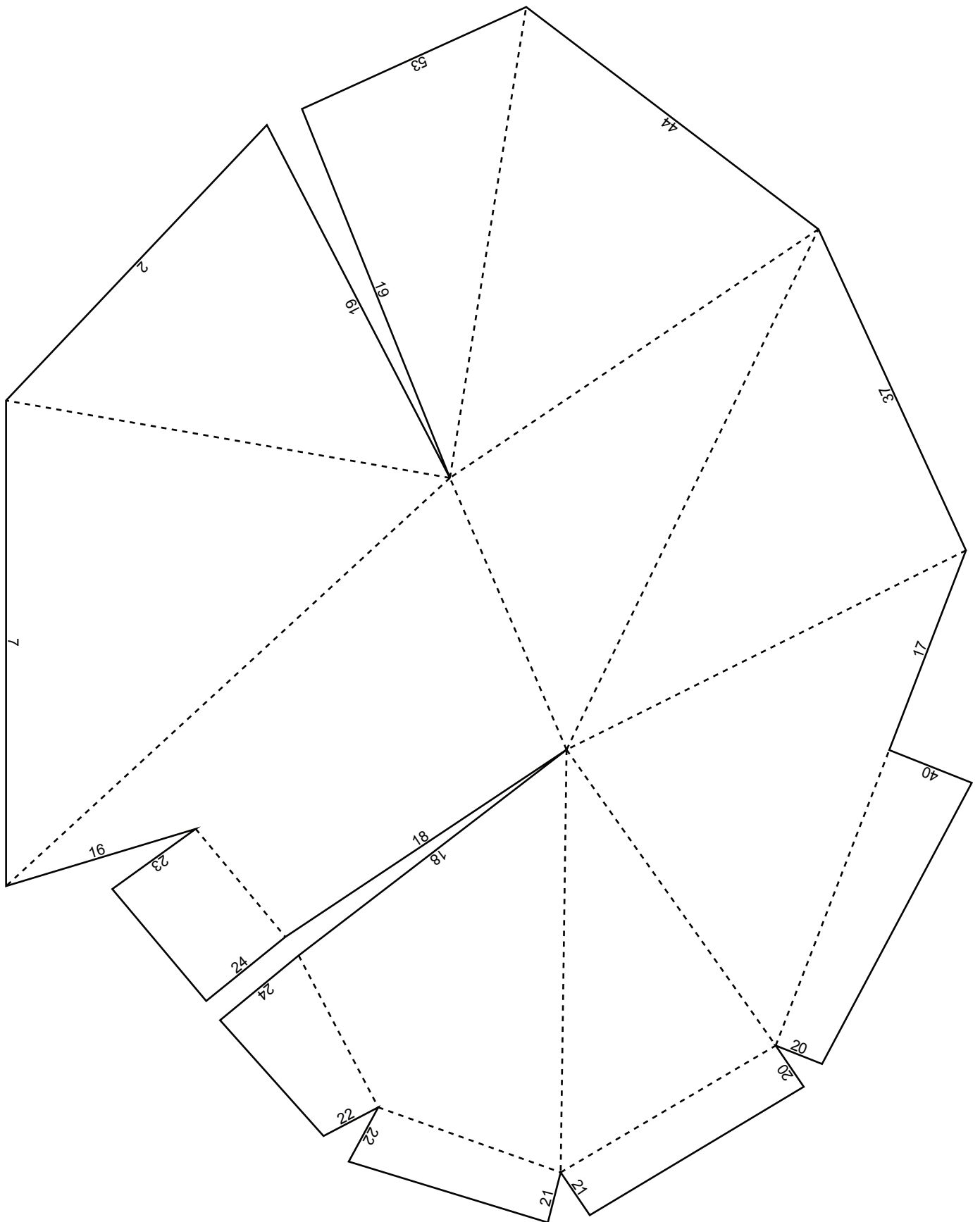
To check the scale is correct, the line below should be 150mm from end to end.



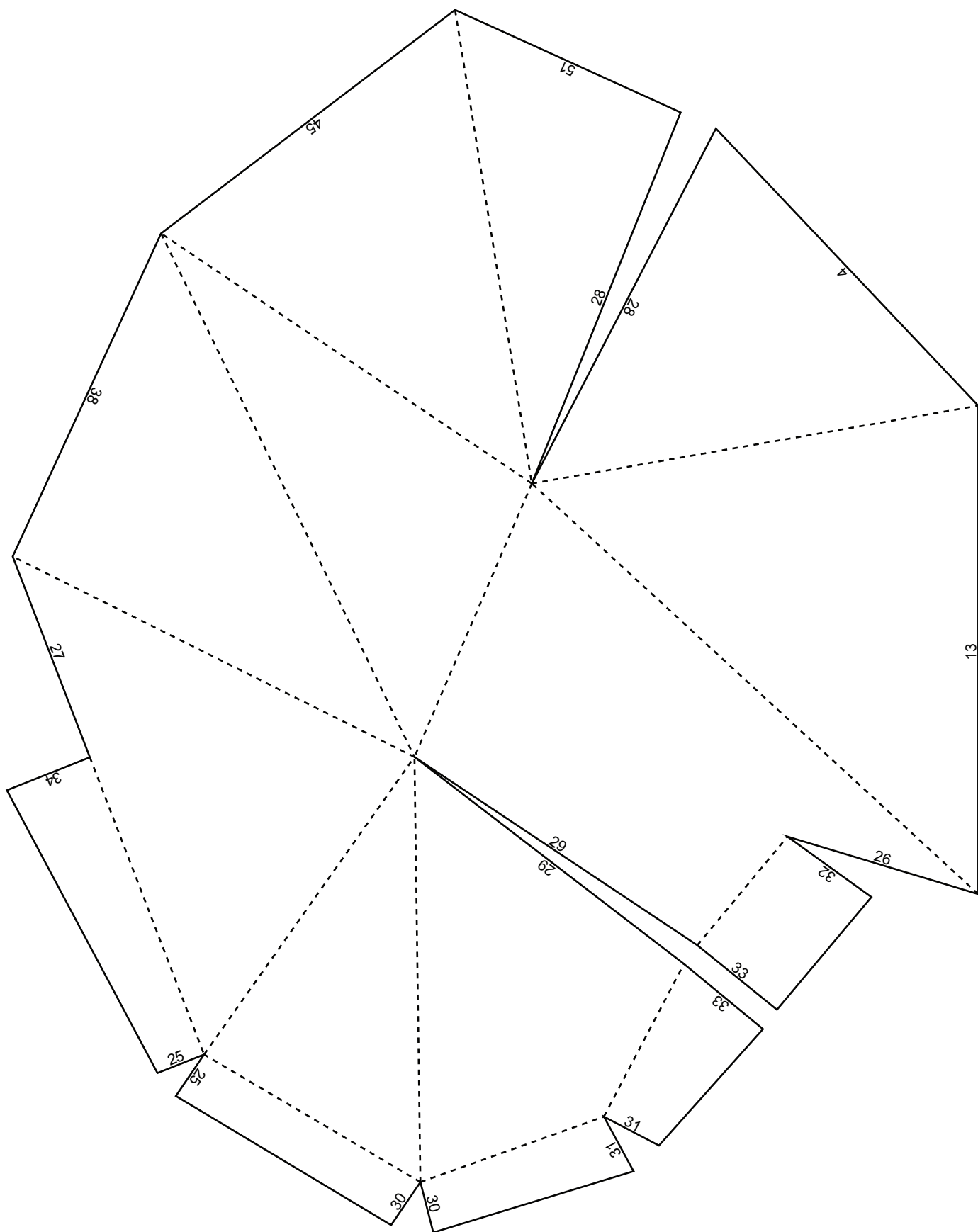


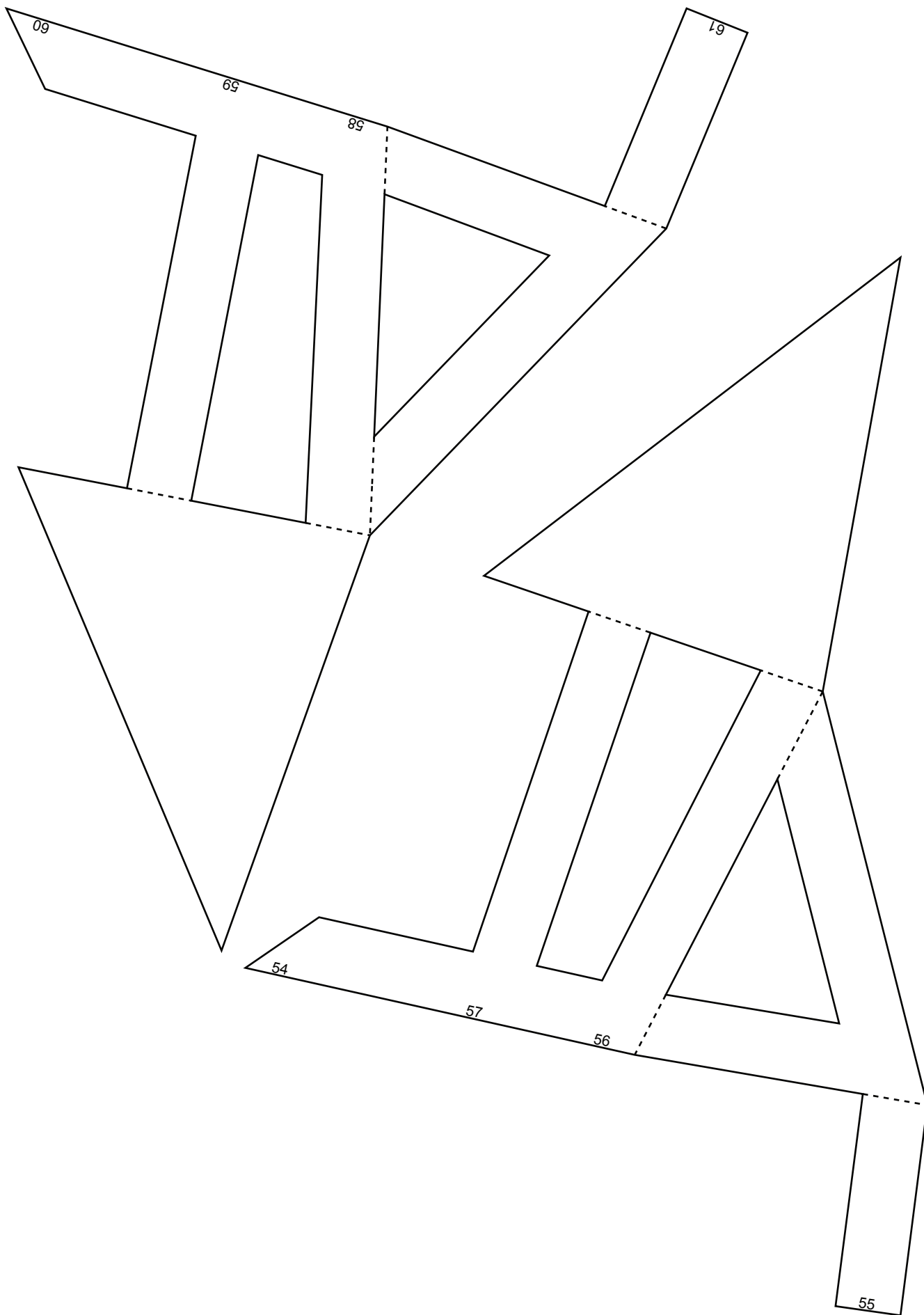


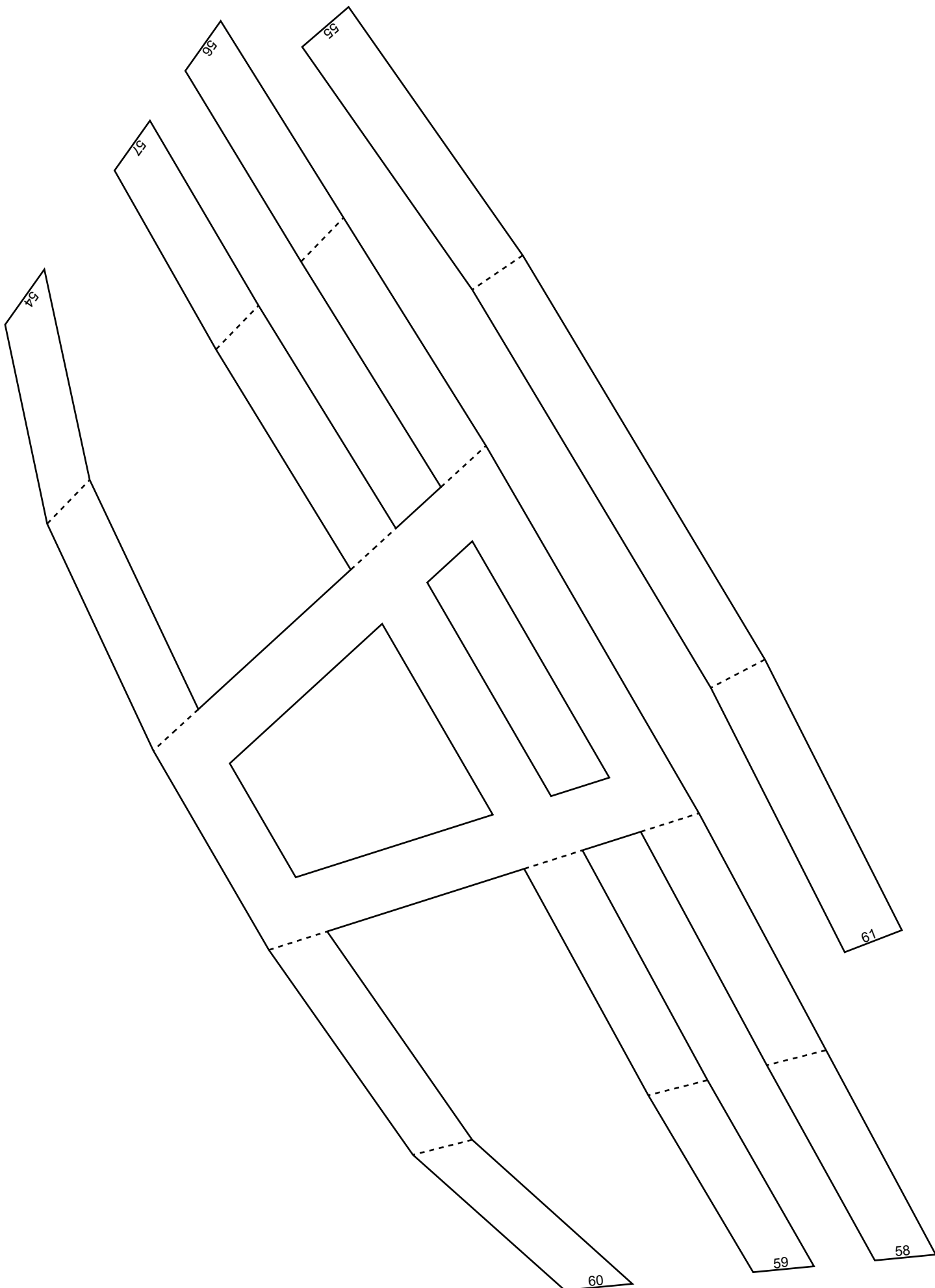














WINTERCROFT

# Head Band

To ensure the completed helmet fits well you can make a head band and fit it inside of the helmet.

## Instructions for assembly

1. Cut two strips of card to roughly the dimensions below and the tape one end together.
2. Then wrap the band around your head and tape the other end to get a good fit. The band should be snug but not tight.
3. Take the band off your head and tape the tabs to the inside of the helmet.
4. You might need to move the tabs around a little until you get it fitting right.

NOT TO SCALE

400mm



Cut two pieces of card at these dimensions

60mm

40mm

Tape to the inside of the helmet here

Tape together here

Tape to the inside of the helmet here

Tape together here